

## SMT Wire Wound Inductors - SDO5022 SERIES

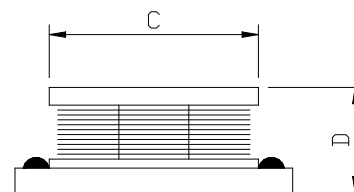
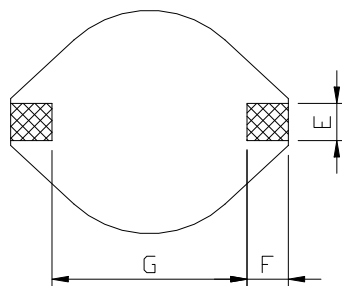
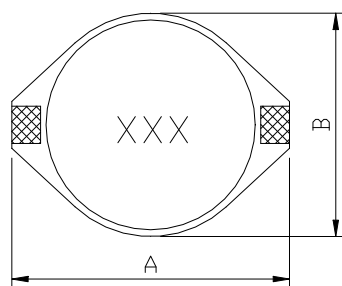


### PART NUMBERING SYSTEM

<b>SDO</b>	<b>5022</b>	—	<b>681M</b>	—	<b>LF</b>
TYPE	DIMENSIONS		INDUCTANCE		LEAD FREE

### SHAPES AND DIMENSIONS

UNIT : mm

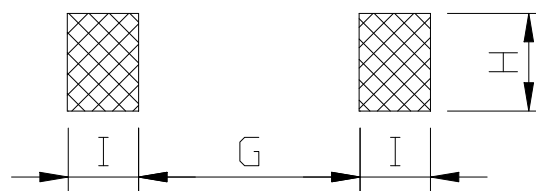


A=18.54 Max. B=15.24 Max. C=12.70 Dia. D=7.11 Max. E=2.54 F=2.54 G=12.7

### RECOMMENDED PATTERNS

UNIT : mm

G=12.7 H=2.79 I=2.92



### FEATURES

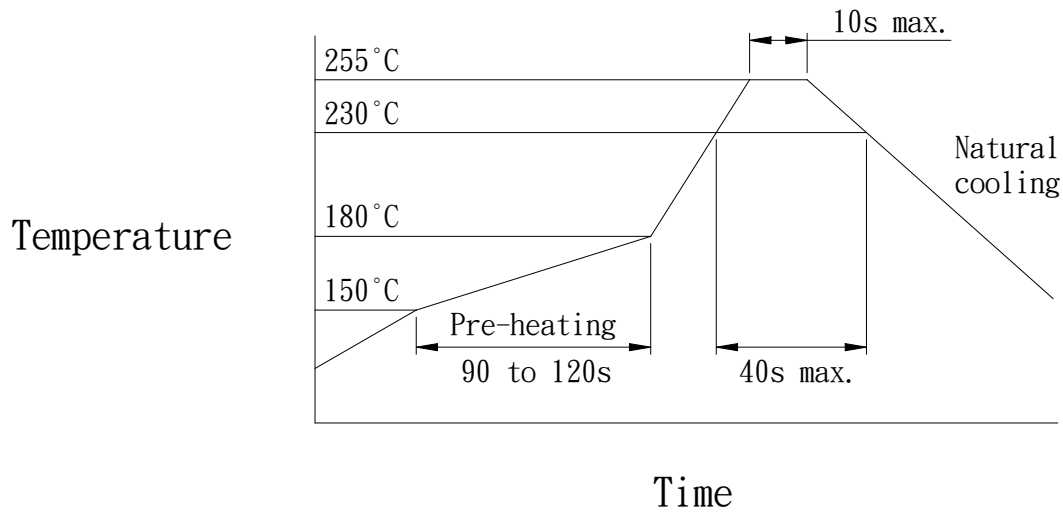
- Very high current rating - **up to 8.6 Arms, 20 A saturating current!**
- Inductance ratings from 0.78 to 1000  $\mu$ H
- **Flat top** for reliable surface mounting
- **Robust temperature deflection** prevents damage during solder reflow
- Custom versions available
- **RoHS-compliant.** 260°C compatible. Gold over nickel over phos bronze terminations.

## SPECIFICATION TABLE

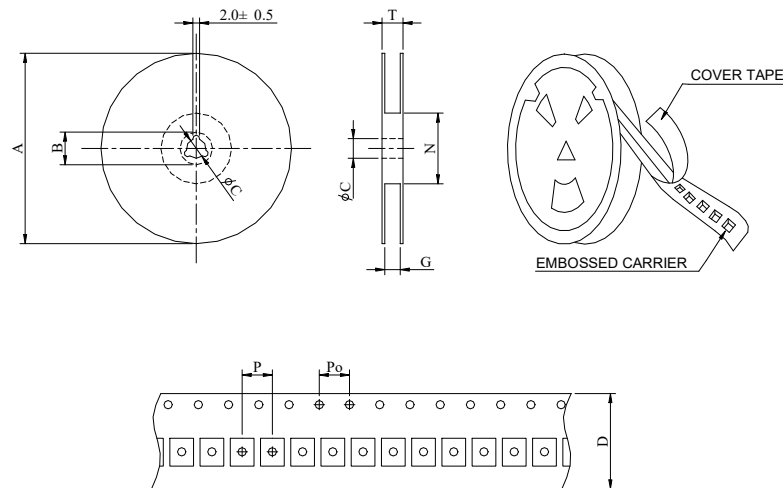
PART NUMBER	INDUCTANCE ( $\mu$ H)	DCR ( $\Omega$ ) (Max.)	Isat ( A ) (Max.)	Irms ( A ) (Max.)	SRF(MHz) (Ref.)
SDO5022-1R0M-LF	1.0 $\pm$ 20%	0.009	20.0	8.6	80
SDO5022-2R2M-LF	2.2 $\pm$ 20%	0.014	16.0	7.1	80
SDO5022-3R3M-LF	3.3 $\pm$ 20%	0.018	14.0	6.2	60
SDO5022-5R6M-LF	5.6 $\pm$ 20%	0.020	12.0	5.3	40
SDO5022-8R2M-LF	8.2 $\pm$ 20%	0.029	10.0	4.8	30
SDO5022-100M-LF	10 $\pm$ 20%	0.031	10.0	4.3	30
SDO5022-150M-LF	15 $\pm$ 20%	0.036	8.0	4.0	22
SDO5022-220M-LF	22 $\pm$ 20%	0.047	7.0	3.5	20
SDO5022-330M-LF	33 $\pm$ 20%	0.066	5.5	3.0	15
SDO5022-470M-LF	47 $\pm$ 20%	0.086	4.5	2.6	9
SDO5022-680M-LF	68 $\pm$ 20%	0.13	3.5	2.3	8
SDO5022-101M-LF	100 $\pm$ 20%	0.19	3.0	1.8	7
SDO5022-151M-LF	150 $\pm$ 20%	0.25	2.6	1.5	6
SDO5022-221M-LF	220 $\pm$ 20%	0.38	2.4	1.2	5
SDO5022-331M-LF	330 $\pm$ 20%	0.56	1.9	1.0	4
SDO5022-471M-LF	470 $\pm$ 20%	0.85	1.4	0.82	3
SDO5022-681M-LF	680 $\pm$ 20%	1.10	1.2	0.72	2.5
SDO5022-102M-LF	1000 $\pm$ 20%	1.80	1.0	0.56	2.0

1. Inductance is measured with a LCR meter 4284A or equivalent.
2. Inductance drop=10% typ. at rated current.
3. Operating temperature range -40°C to +125°C
4. Electrical specifications at 25°C

## REFLOW SOLDERINGS



## PACKAGING SPECIFICATION



SERIES	STAYLE	Q'TY (PCS)	DIMENSIONS (m/m)								
			A	B±0.8	C±0.5	D	G <sup>+0</sup>	N <sup>0</sup>	P	Po	T
SDO5022	13-32	250	330	21	13	32	34	100	20	4	38.4